

Suillus luteus Common slippery jack;
With all pines; veil purple



Suillus luteus in the southern hemisphere



Photo: L. Kudzma

- native to Eurasia
- Widely introduced with *Pinus sylvestris* into N. America
- Introduced early (1800's) into Australia and NZ
- Widely associated with *P. radiata* and *P. contorta* plantations in Australia, New Zealand (Dickie et al. 2010, 2014), Chile (Hayward et al. 2015a), and Argentina (Hayward et al. 2015b).
- Dispersal often abetted by non-native mammals (deer and boars): “invasional meltdown” (Simberloff and Von Holle 1999)



MURU6263_Suillus_granulatus.
Western Australia (Bill Dunstan)

Suillus granulatus

Stipe with granules; flesh pale becoming yellow. Introduced from Europe; common on many pine species in Australia and NZ



Suillus collinitus

stipe base pink/purple, stipe granular; under maritime pines in SA and WA. Introduced from Europe

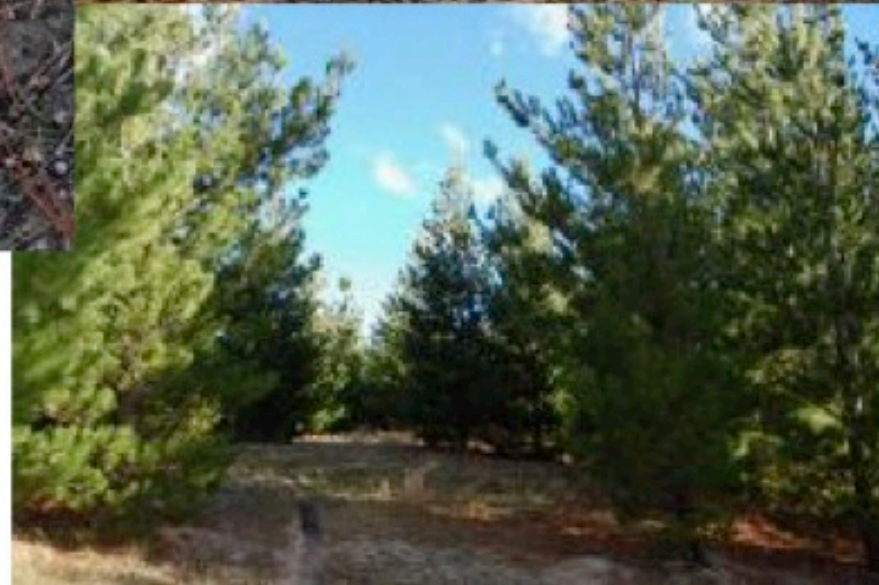




Suillus bovinus
*Yellowish overall, no veil, no granules,
pores slightly decurrent. Introduced
from Europe*



Suillus quiescens
ACT, July 2014





Suillus quiescens
pileus slimy, brown, stipe often short,
young pores clay coloured;
Introduced with radiata pine; very common

